

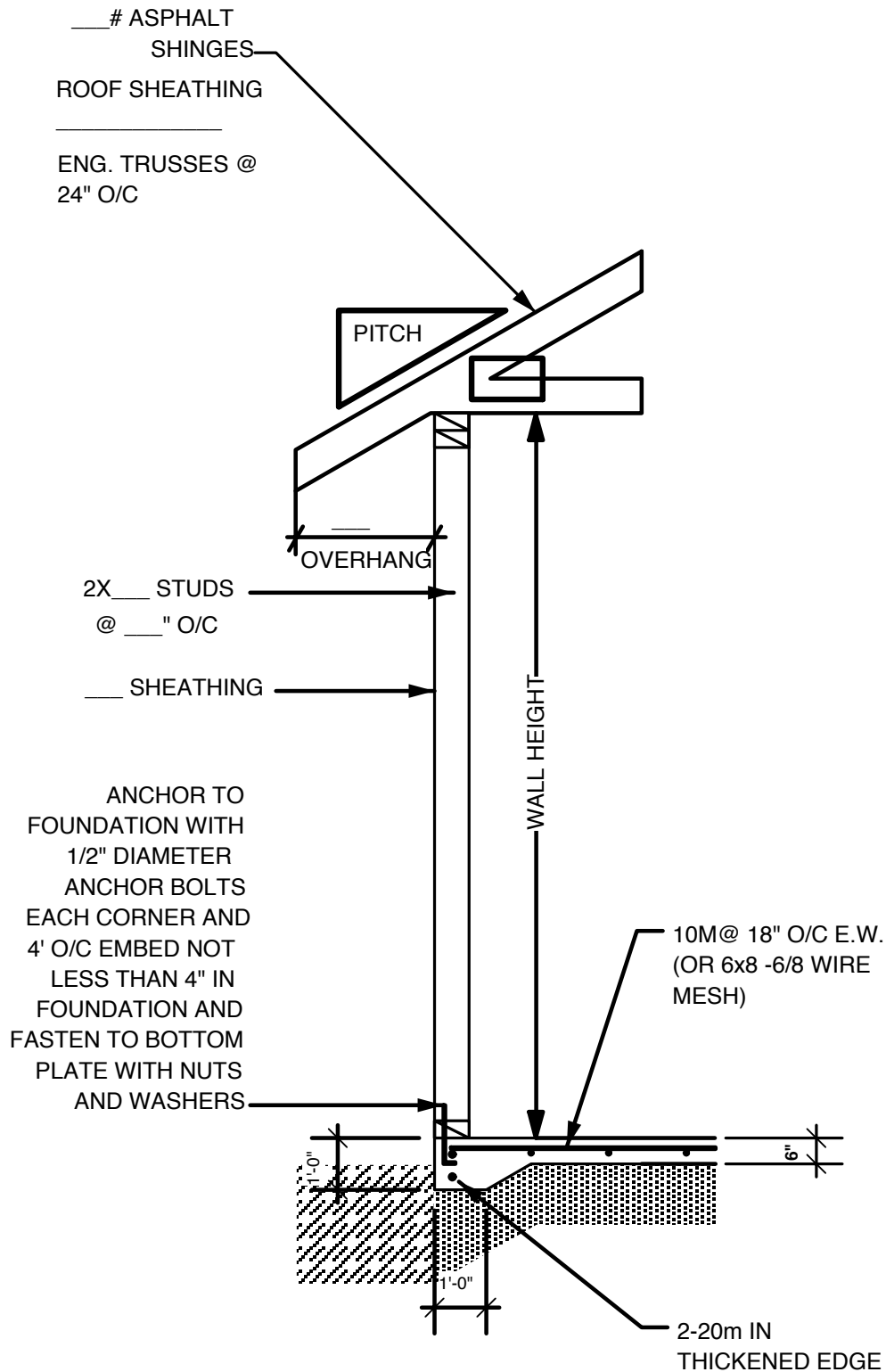


SELKIRK AND DISTRICT PLANNING AREA BOARD

200 EATON AVENUE, SELKIRK, MANITOBA R1A 0W6

Website: www.selplan.net E-mail: info@selplan.net

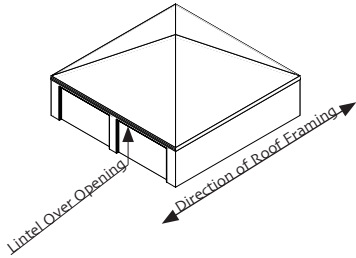
Phone: (204) 482.3717 Toll Free: 1.800.876.5831 Fax: (204) 482.3799



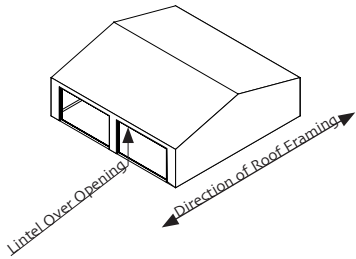
Foundation Requirements for Slab up to 900 square feet (over 900 square feet requires engineer's stamp for pad)

DETACHED GARAGE SECTION

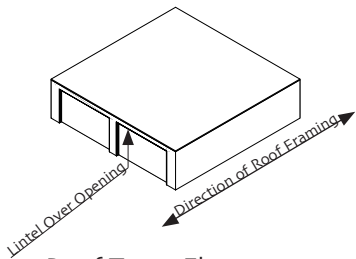
Roof Styles with Lintel Supporting Roof



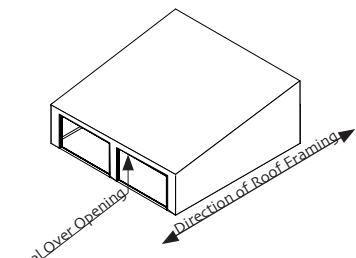
Roof Type: Hip



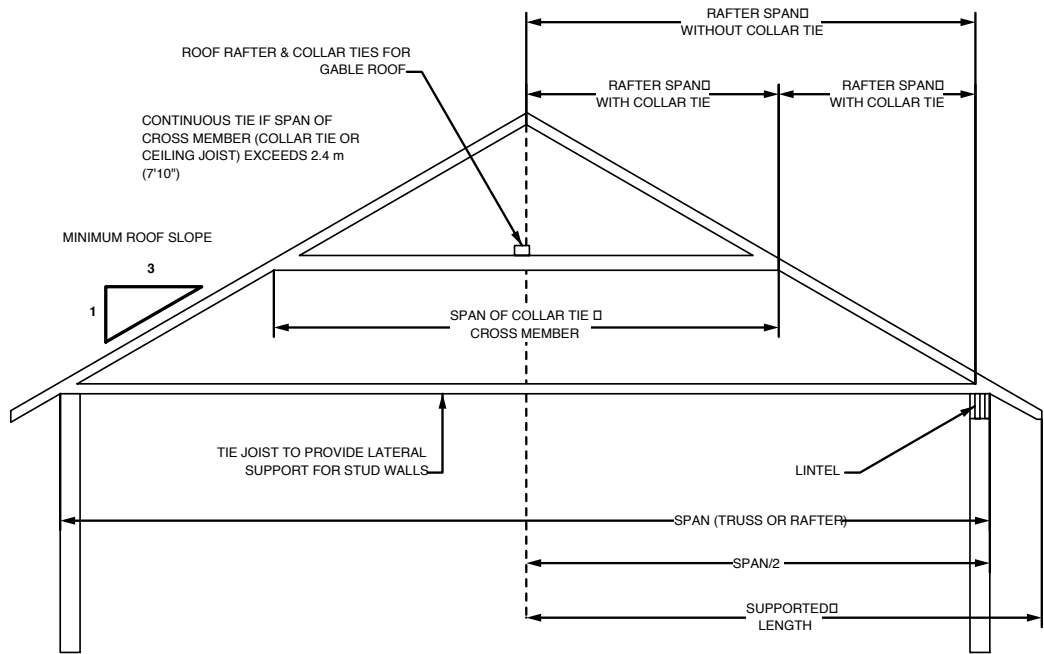
Roof Type: Gable #2



Roof Type: Flat
(no upper deck)



Roof Type: Mono
(Shanty)



ROOF RAFTER SPANS: Rafter NOT supporting ceiling (Design Roof Snow Loads for 2.0 kPa (38.9 psf))					
Commercial Designation	Grade	Member Size (inch)	Rafter Spacing		
			12 in. ft-in	16 in. ft-in	24 in. ft-in
Douglas Fir Larch	No.	2x4	8-5	7-8	6-9
	1 and No. 2	2x6	13-4	11-9	9-7
		2x8	16-7	14-4	11-8
	2x10	2x10	20-3	17-7	14-4
		2x12	23-6	20-4	16-8
Spruce - Pine - Fir	No.	2x4	8-1	7-4	6-5
	1 and No. 2	2x6	12-9	11-6	10-1
		2x8	16-9	15-2	12-9
	2x10	2x10	21-4	19-1	15-7
		2x12	25-7	22-2	17-0

WOOD LINTELS – NOT supporting roof loads	
Door Width Opening	Lintel – Gable Roof Only (Door in Gable End)
8 ft	2-2x8
9 ft	2-2x8
10 ft	2-2x10
12 ft	2-2x10
14 ft	2-2x10
16 ft	2-2x10

WOOD LINTEL SPANS FOR WINDOWS AND MAN DOORS	
Size of Lintels	Maximum Allowable Spans
2-2x4	3 ft – 6 in
2-2x6	5 ft – 2 in
2-2x8	6 ft – 4 in
2-2x10	7 ft - 9 in
2-2x12	9 ft – 0 in

WOOD LINTELS – Supporting Roof Loads (Design Roof Snow Loads 2.0 kPa (38.9 psf))				
Width of Opening (Lintel Span)	SUPPORTED LENGTH (see diagram above)			
	10 ft	12 ft	14 ft	16 ft
8 ft	3-2x8	3-2x8	3-2x8	3-2x10
9 ft	3-2x8	3-2x10	3-2x10	3-2x10
10 ft	3-2x10	3-2x10	3-2x12	3-2x12
12 ft	3-2x12	3-2x12	4-2x12	3-2x14
14 ft	4-2x12	4-2x12	3-2x14	Design Req'd by Engineer
16 ft	3-2x14	Design Req'd by Engineer	Design Req'd by Engineer	Design Req'd by Engineer